



SCIENTIFIC  
REGISTRY OF  
TRANSPLANT  
RECIPIENTS

# LI 2017\_02 Preliminary Results

David Schladt, MS; Tim Weaver, MS; Josh Pyke, PhD; Bryn Thompson, MPH; Jessica Zeglin, MPH; Bertram L. Kasiske, MD; Ajay K. Israni, MD; Sommer Gentry, PhD; John R. Lake, MD; Jon Snyder, PhD; W. Ray Kim, MD

# Background

- On June 29, the OPTN Liver & Intestinal Organ Transplantation Committee requested that SRTR use the liver simulated allocation model (LSAM) software to undertake simulation modeling of several potential liver distribution policies.
- This presentation contains preliminary results for selected metrics chosen by the committee. While work on this data request continues, SRTR prioritized calculation and review of these metrics in order to provide a preview of the full analysis.
- A full report will be submitted on or before October 3, adding further metrics including insurance type and rural/urban candidate subgroup analysis. SRTR does not expect the results presented in these slides to change in the final analysis.

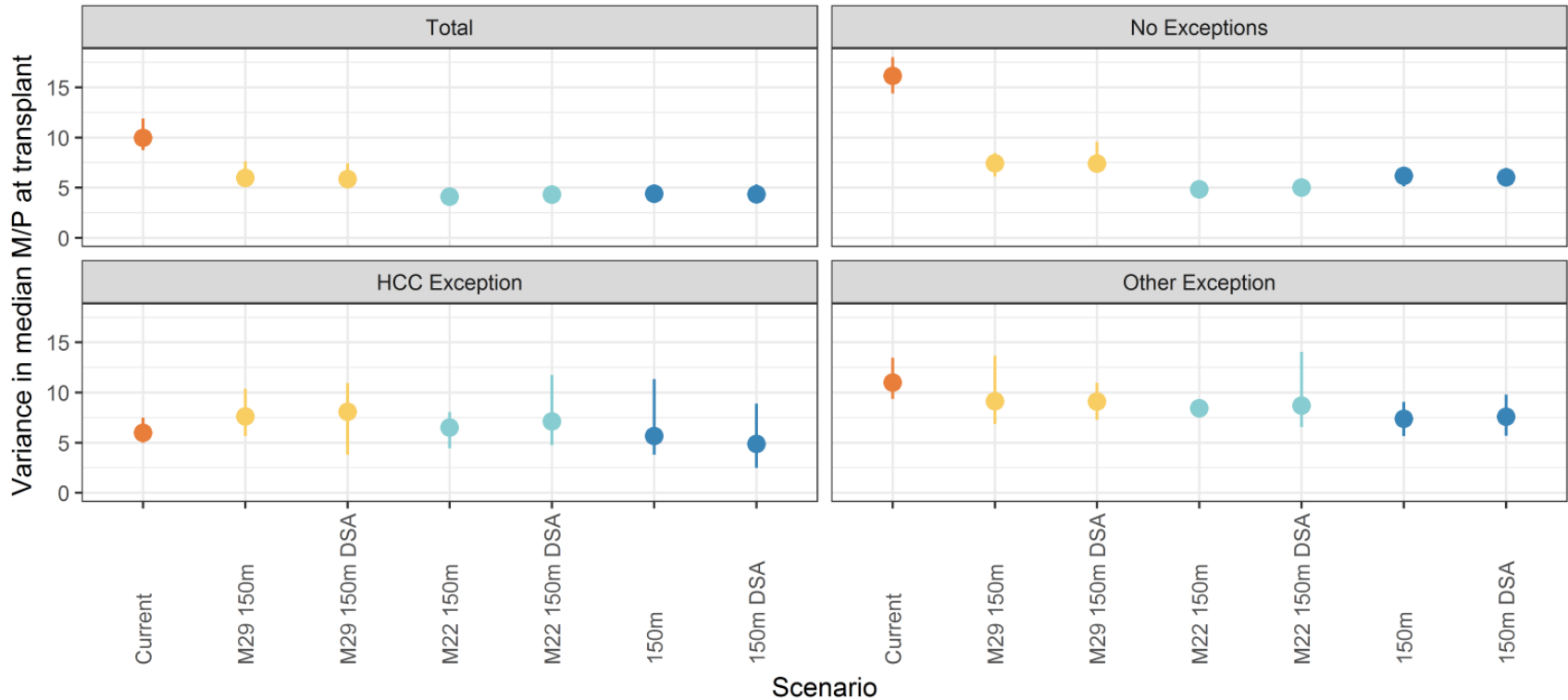
# Policy scenarios

- All alternative scenarios use the current 11 UNOS regions together with 150-mile circles centered on the donor hospital.
- Scenarios differ in the MELD/PELD threshold used for regional sharing eligibility and the area used for awarding the 5 proximity points (150-mile circle or DSA + circle).
- Scenarios with sharing thresholds use laboratory MELD to prioritize all candidates in the regional sharing tier.
- Scenario 2 (M29 150m) implements the public comment proposal.

	System label	Proximity point implementation	Sharing threshold
1	Current	n/a	n/a
2	M29 150m	5 points awarded to candidates within a 150 mile radius of the donor hospital	MELD/PELD of 29
3	M29 150m DSA	5 points awarded to candidates within the DSA or 150 miles of the donor hospital	MELD/PELD of 29
4	M22 150m	5 points awarded to candidates within a 150 mile radius of the donor hospital	MELD/PELD of 22
5	M22 150m DSA	5 points awarded to candidates within the DSA or 150 miles of the donor hospital	MELD/PELD of 22
6	150m	5 points awarded to candidates within a 150 mile radius of the donor hospital	none
7	150m DSA	5 points awarded to candidates within the DSA or 150 miles of the donor hospital	none

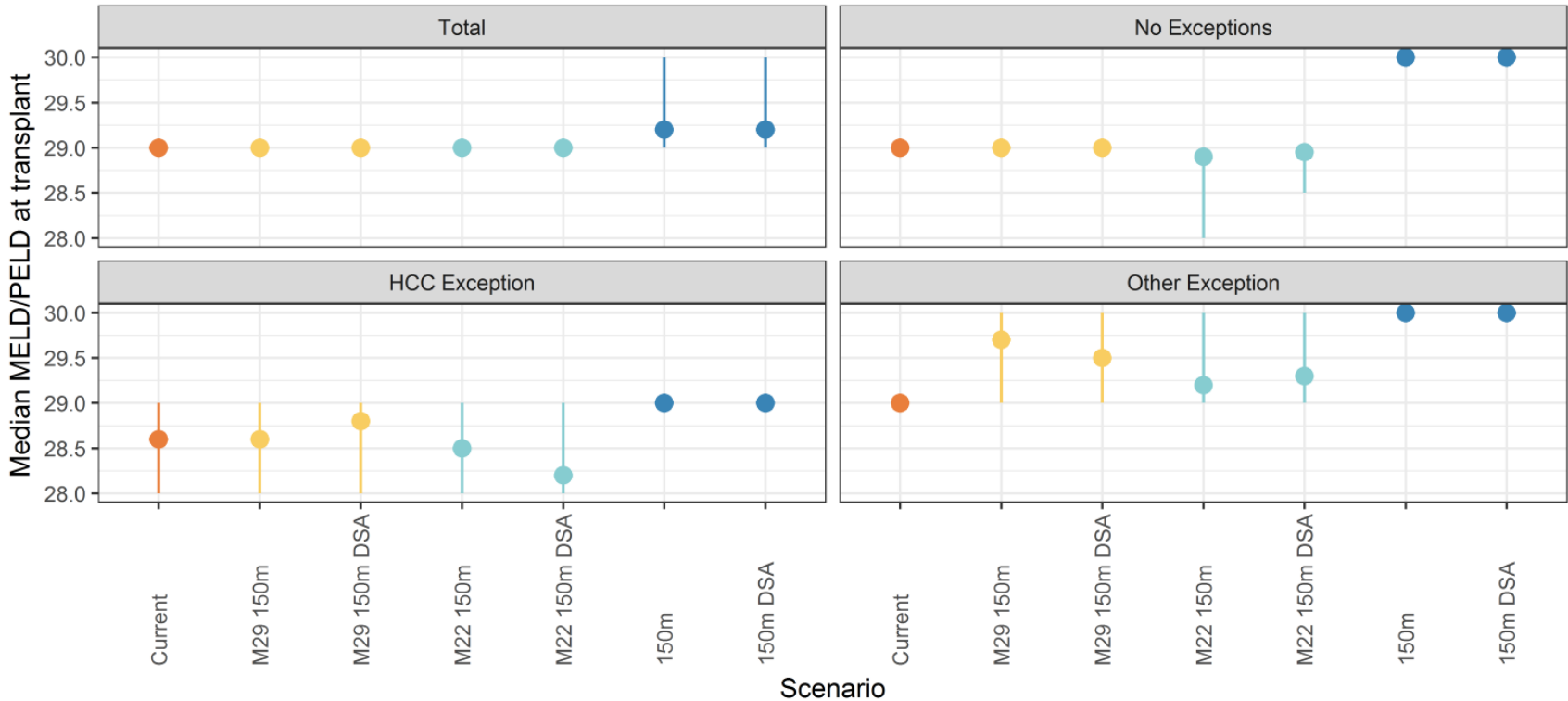
# Variance in median M/P at transplant

Variance in Median M/P at Transplant by DSA by Exception Status

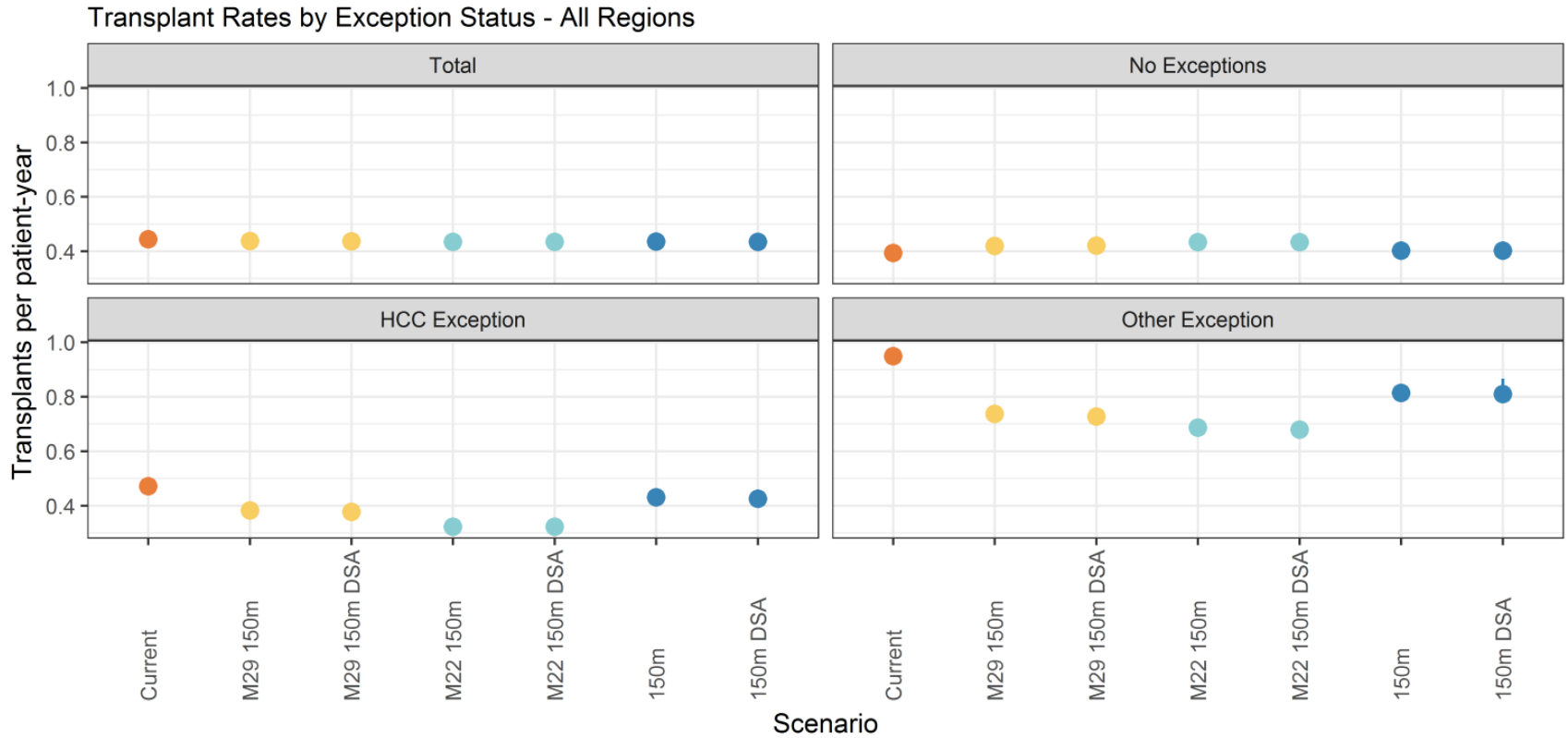


# Median MELD/PELD at transplant

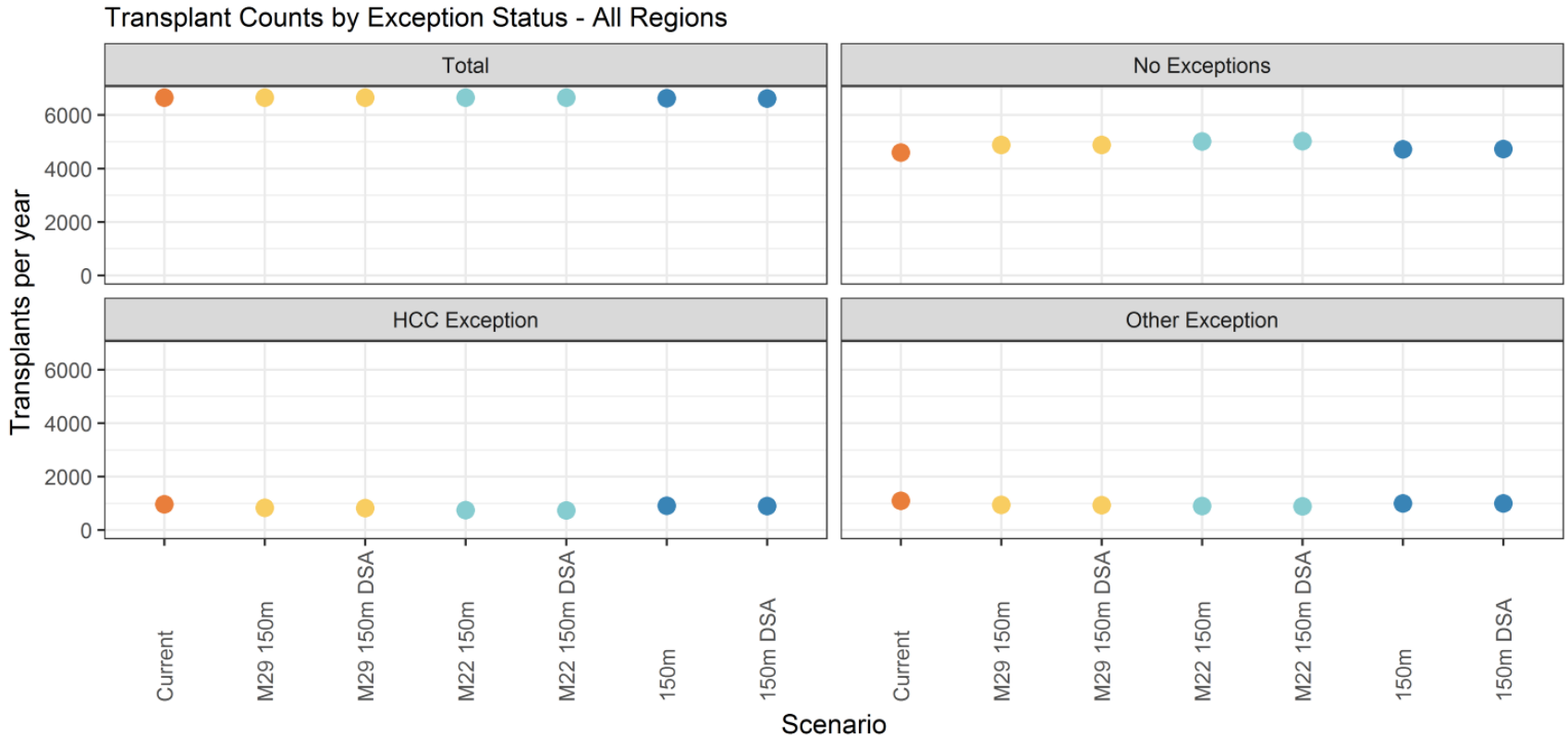
Median M/P at Transplant by Exception Status - All Regions



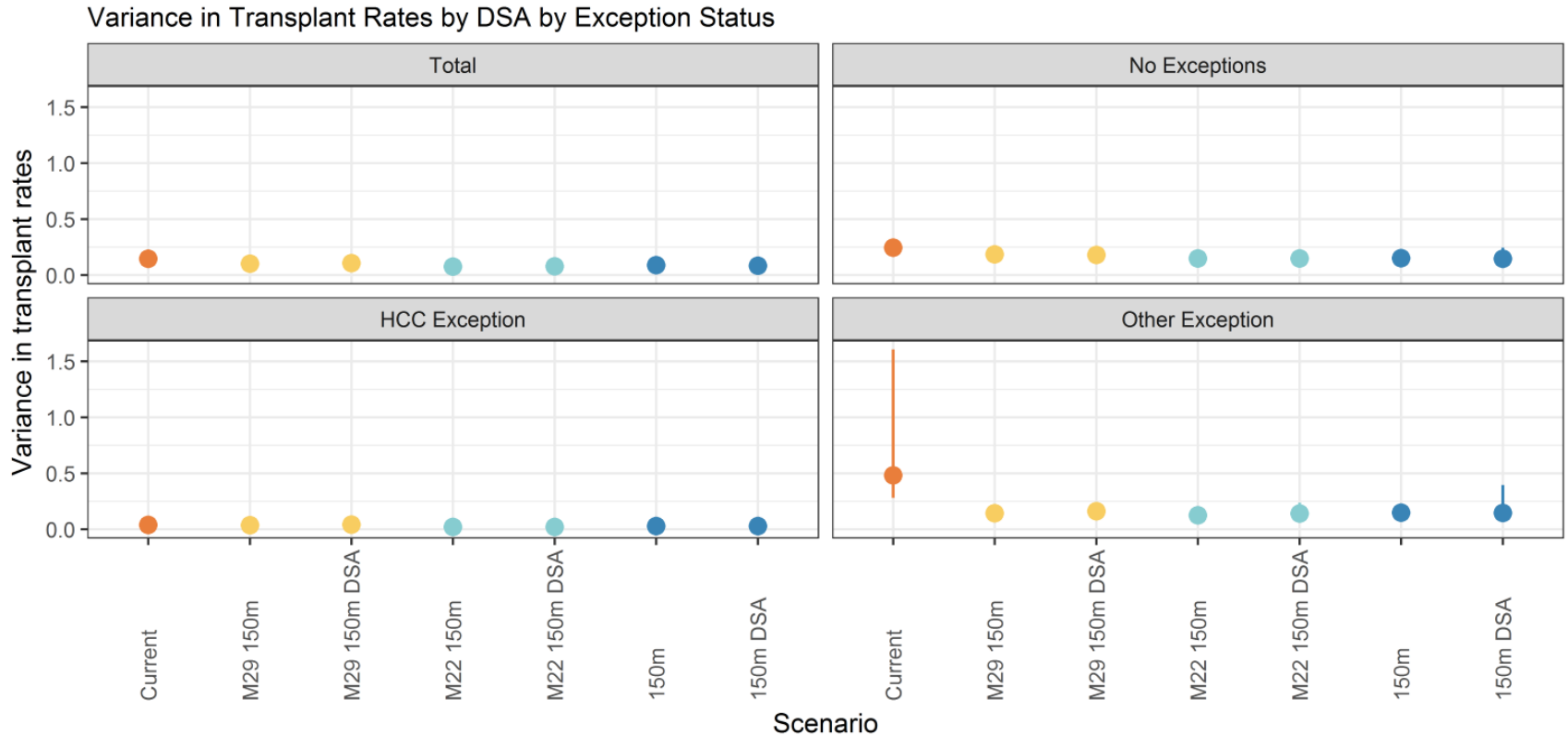
# Transplant rates



# Transplant counts



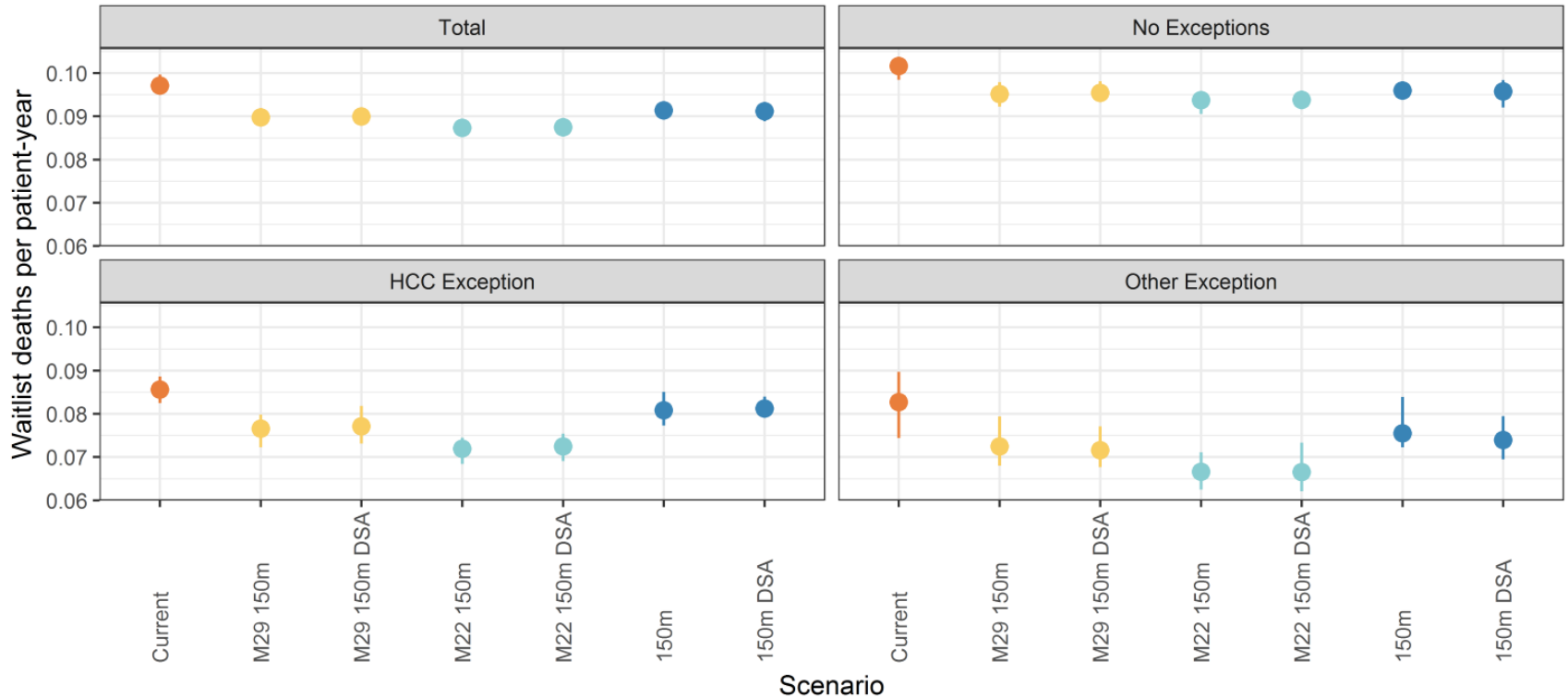
# Variance in transplant rates



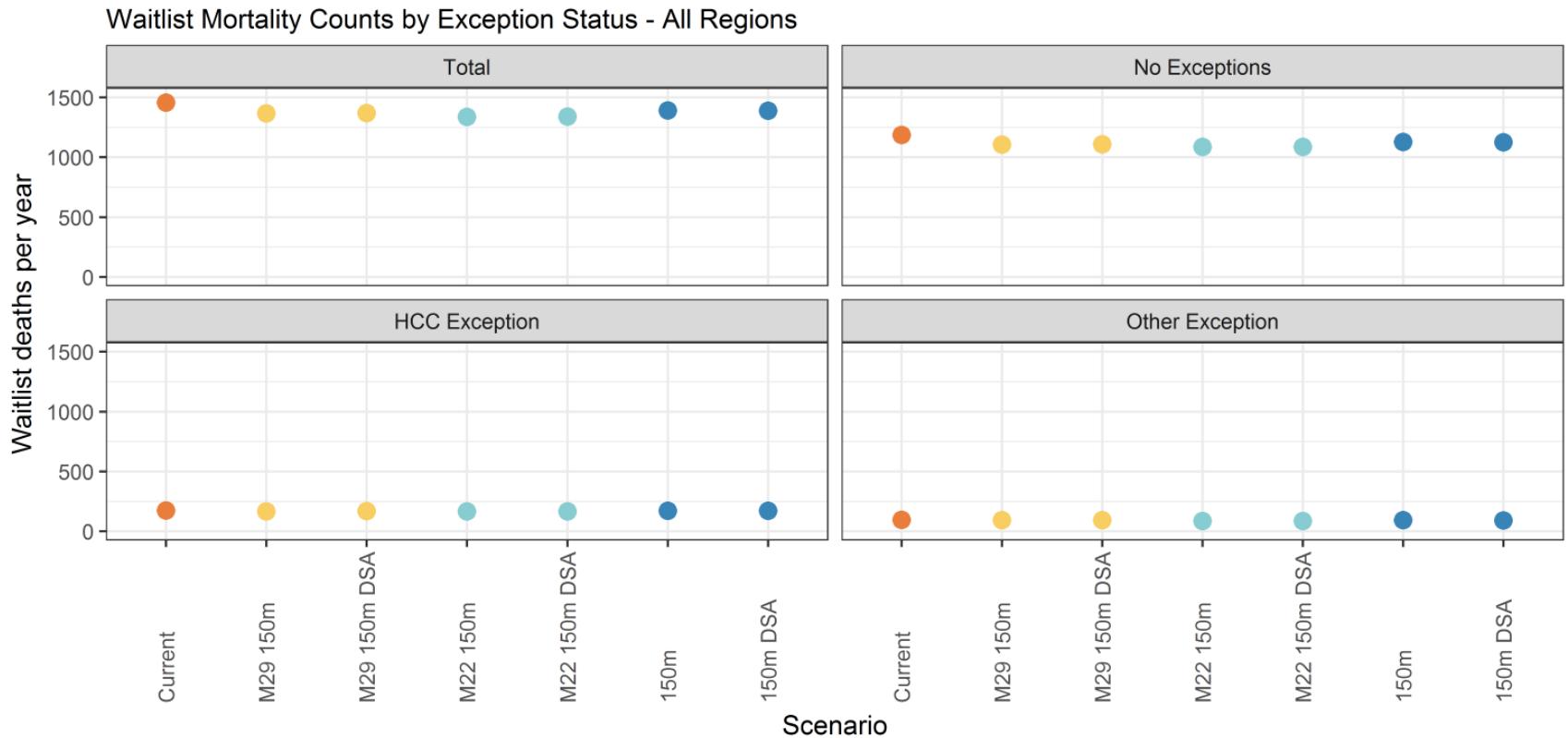


# Waitlist mortality rates

Waitlist Mortality Rates by Exception Status - All Regions

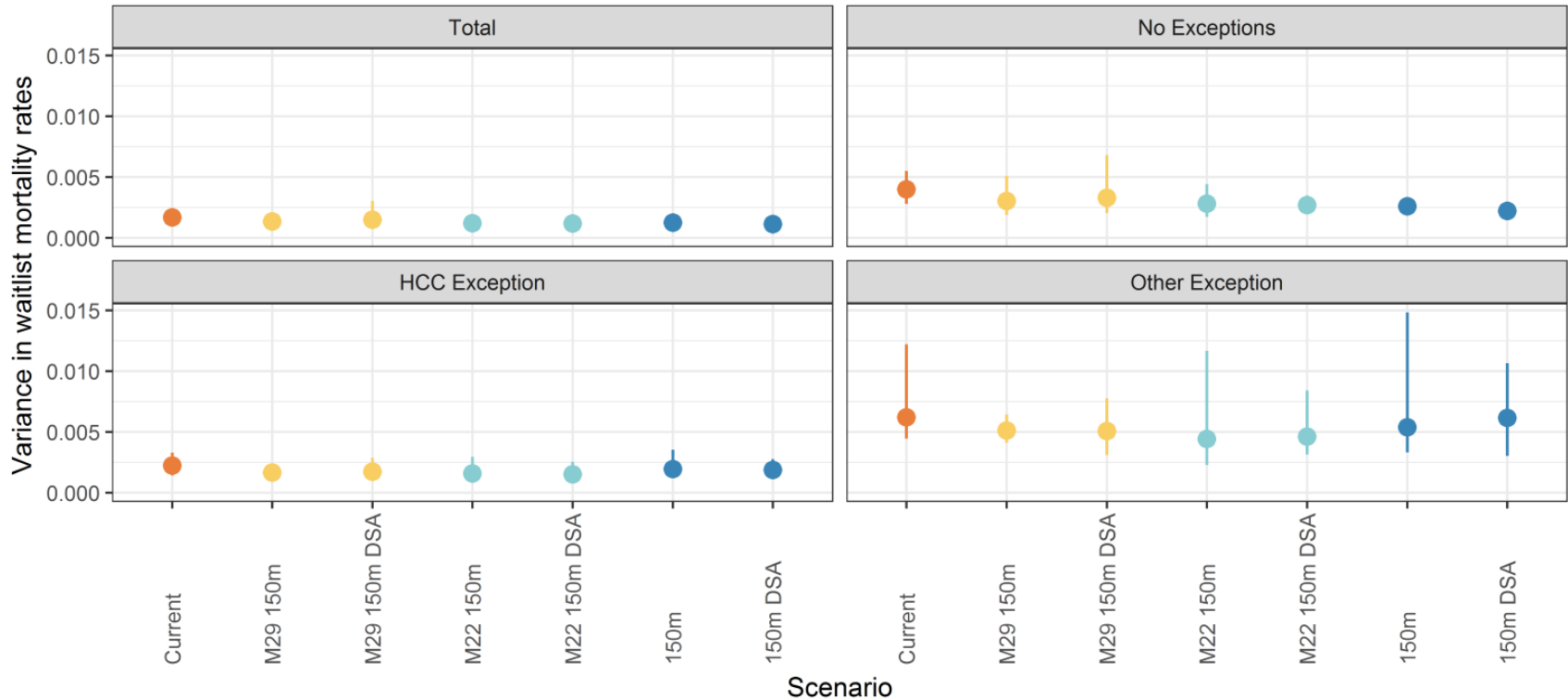


# Waitlist mortality counts

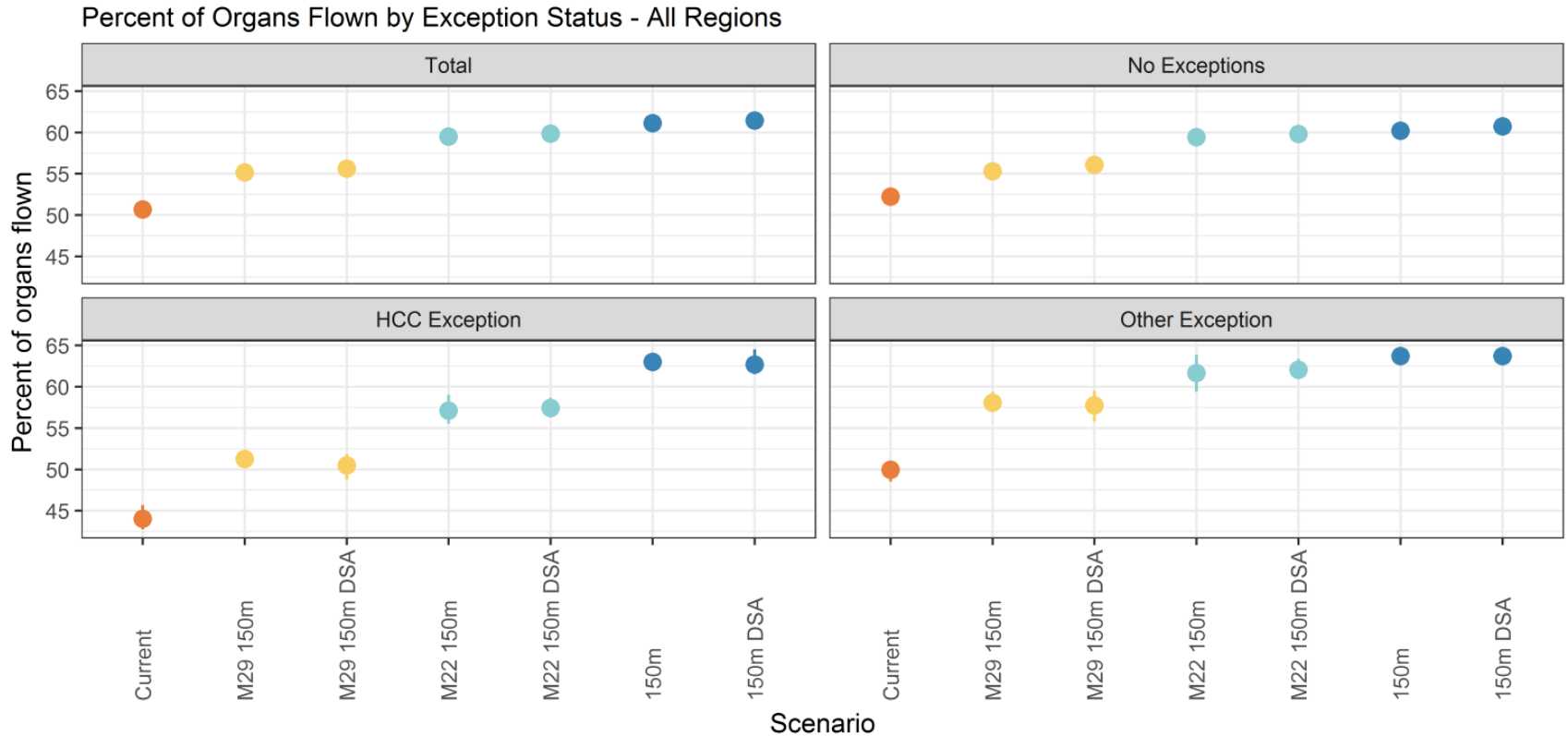


# Variance in waitlist mortality rates

Variance in Waitlist Mortality Rates by DSA by Exception Status



# Percent of organs flown



# Percent of transplants performed locally

